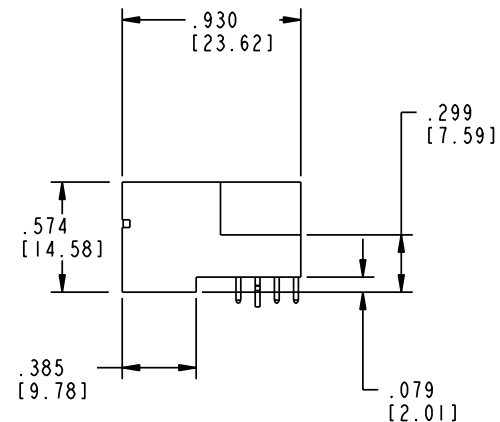
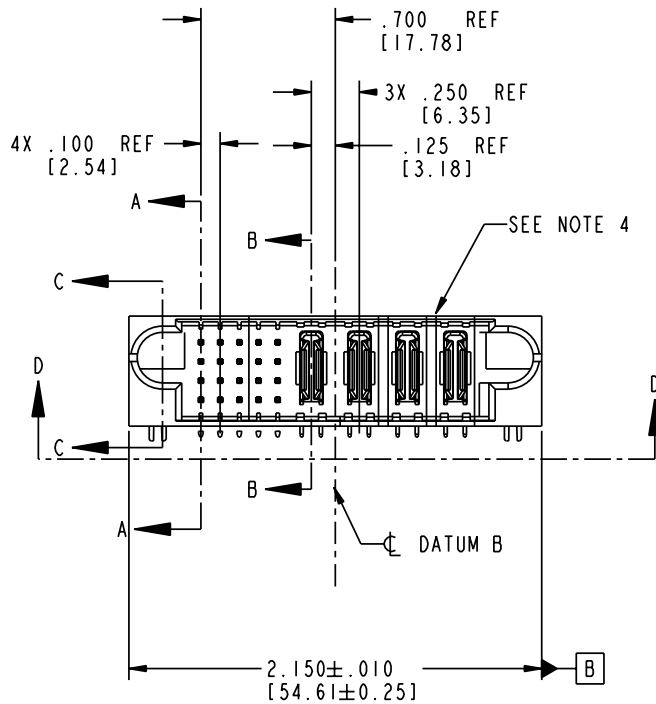
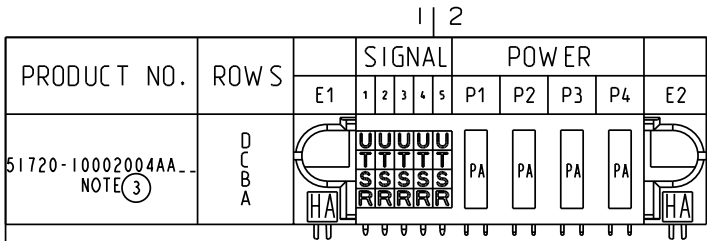


Tous droits strictement réservés. Reproduction ou communication a des tiers interdite sous quelque forme que ce soit sans autorisation écrite du propriétaire. Propriété de c FCI. Droits de reproduction FCI.

All rights strictly reserved. Reproduction or issue to third parties in any form whatever is not permitted without written authority from the proprietor. Property of FCI. Copyright FCI.

FCI



CODE	DIM "M" MATING LENGTH	CONTACT TYPE
R	.270 [6.86]	SIGNAL
S	.270 [6.86]	SIGNAL
T	.270 [6.86]	SIGNAL
U	.270 [6.86]	SIGNAL
PA	N/A [N/A]	POWER
HA	N/A [N/A]	HOLD-DOWN

mat'l code				tolerances unless otherwise specified		CUSTOMER	
lfr	ecn no.	dr	date	linear	angles	COPY	
A	DG05-0064	SW	04/06/05	.XX±.01/0.X±0.3	0°±2°	projection	
				.XXX±.005/0.XX±0.13		INCH/MM	
				.XXX±.0020/0.XXX±0.051		scale	
				dr STEVEN WANG 04/06/05		1:1	
				enr STEVEN WANG 04/06/05			
				chr VICTOR LIN 04/06/05			
				appd JOSEPH HSIA 04/06/05			
sheet index	revision sheet	A	A	A	A		
		1	2	3	4		

A		FCI		www.fciconnect.com	
title				20S + 4P	
product family				PwrBlade	
size		dwg no		code	
A		51720-10002004AA		213	
sheet				1 of 4	

Pro/E

PDM: Rev: A

STAT: Released

Printed: Aug 12, 2007

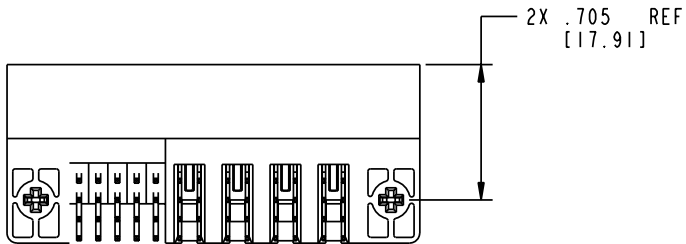
Tous droits strictement réservés. Reproduction ou communication a des tiers interdite sous quelque forme que ce soit sans autorisation écrite du propriétaire. Propriété de c FCI. Droits de reproduction FCI.

All rights strictly reserved. Reproduction or issue to third parties in any form whatever is not permitted without written authority from the proprietor. Property of FCI. Copyright FCI.

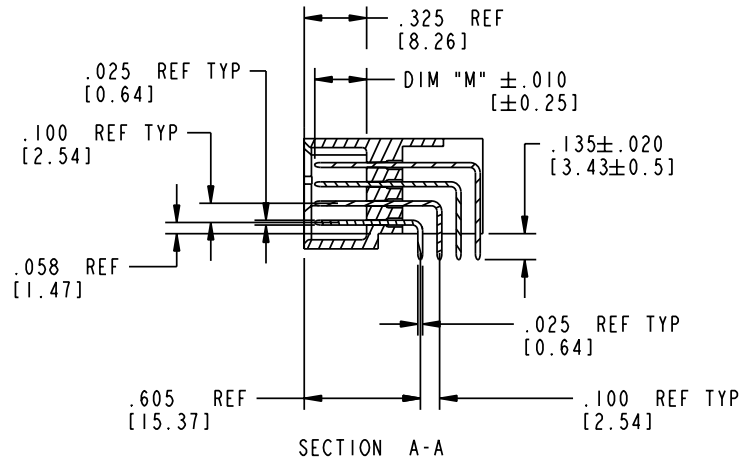
FCI

PRODUCT NUMBER

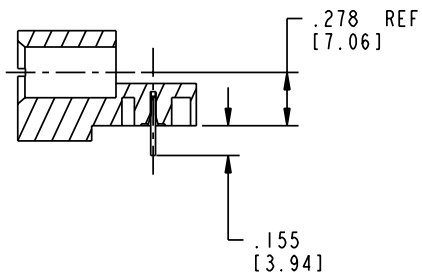
51720-10002004AA...
NOTE (3)



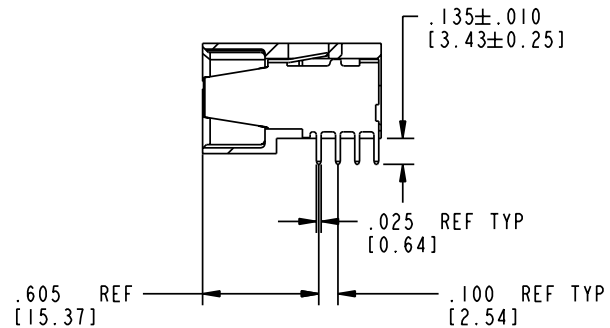
SECTION D-D




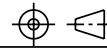
SECTION A-A



SECTION C-C



SECTION B-B

mat'l code		SEE NOTE 2		tolerances unless otherwise specified		CUSTOMER		 www.fciconnect.com	
lfr	ecn no.	dr	date	linear	.XX±.01/0.X±0.3	COPY		title	
A				projection	.XXX±.005/0.XX±0.13			20S + 4P RIGHT ANGLE SOLDER HEADER	
				angles	.XXX±.0020/0.XXX±0.051	INCH/MM		product family	
				dr	0°±2°	scale		PwrBlade	
				engr	STEVEN WANG 04/06/05	1:1		code	
				chr	STEVEN WANG 04/06/05			213	
				appd	VICTOR LIN 04/06/05			sheet	
					JOSEPH HSIA 04/06/05			2 of 4	
sheet index	revision sheet							size 51720-10002004AA	

Pro/E

PDM: Rev: A

STAT: ~~Released~~ **23526**

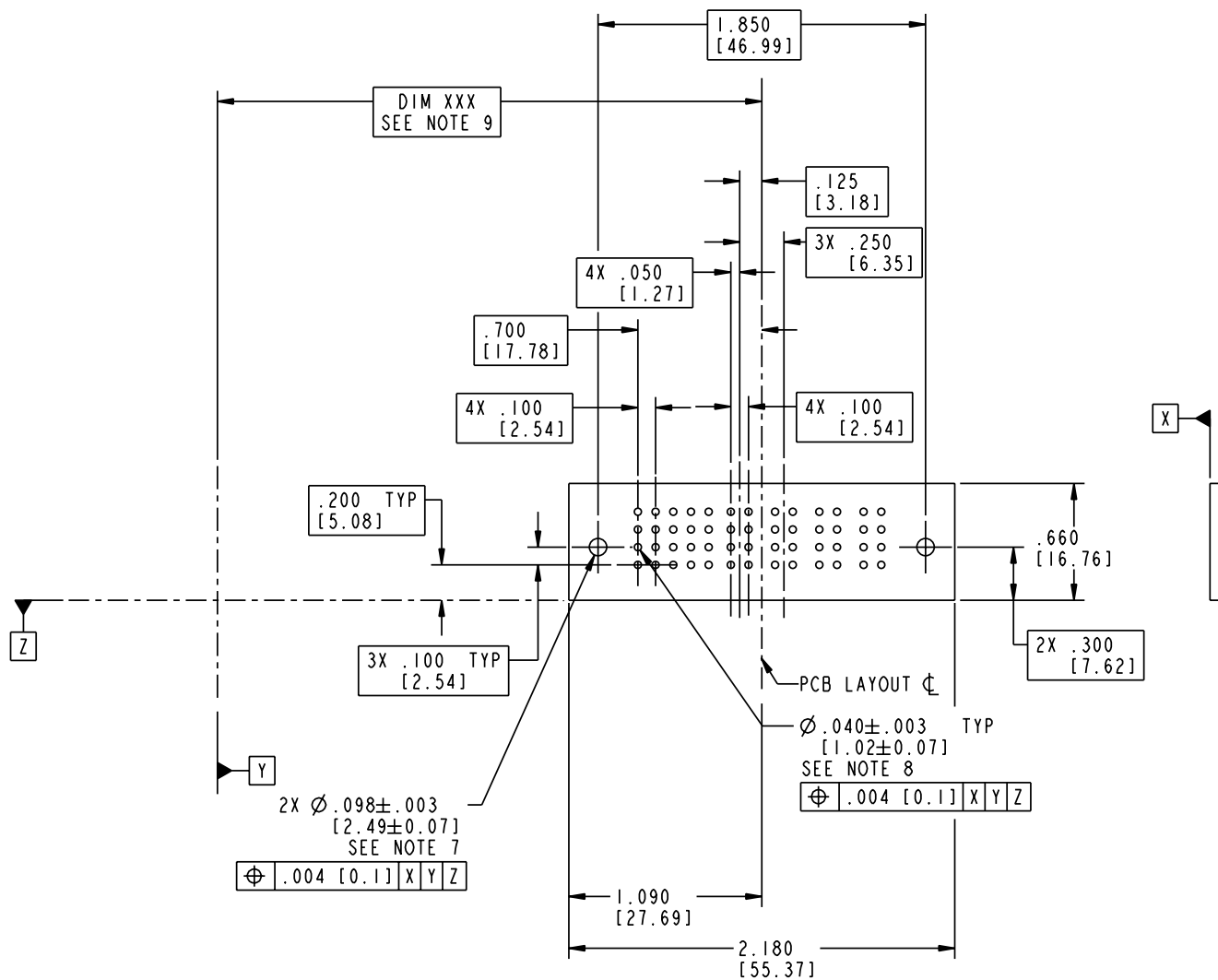
Printed: Aug 12, 2007

Tous droits strictement réservés. Reproduction ou communication a des tiers interdite sous quelque forme que ce soit sans autorisation écrite du propriétaire. Propriété de c FCI. Droits de reproduction FCI.

All rights strictly reserved. Reproduction or issue to third parties in any form whatever is not permitted without written authority from the proprietor. Property of FCI. Copyright FCI.

FCI

PRODUCT NUMBER
51720-10002004AA
 NOTE ③



RECOMMENDED PCB LAYOUT

mat'l code		SEE NOTE 2		tolerances unless otherwise specified		CUSTOMER		 www.fciconnect.com	
lfr	ecn no.	dr	date	linear	.XX±.01/0.X±0.3	COPY		title	
A				projection	.XXX±.005/0.XX±0.13			20S + 4P RIGHT ANGLE SOLDER HEADER	
				angles	.XXX±.0020/0.XXX±0.051			product family	
				dr	0°±2°	INCH/MM		PwrBlade	
				enr	STEVEN WANG 04/06/05	scale		code	
				enr	STEVEN WANG 04/06/05	1:1		213	
				chr	VICTOR LIN 04/06/05			sheet	
				appd	JOSEPH HSIA 04/06/05			3 of 4	
sheet index	revision sheet							size	
								A 51720-10002004AA	

Pro/E

PDM: Rev: A

STAT: Released

Printed: Aug 12, 2007

PRODUCT NUMBER
51720-10002004AA
 NOTE ③

NOTES:

1. DIMENSIONS AND TOLERANCES ARE IN ACCORDANCE WITH ASME Y14.5M, 1994 UNLESS OTHERWISE SPECIFIED.

CONNECTORS NOTES:

2. HOUSING MATERIAL: UL 94 V-0 GLASS FILLED HIGH TEMP THERMO PLASTIC
 POWER CONTACT MATERIAL: COPPER ALLOY
 SIGNAL PIN MATERIAL: COPPER ALLOY

3. PLATING:

51720-10002004AA Singal Pin:30u"/0.76um Au OVER 50u"/1.27um Ni ON THE WHOLE AREA.
 Power Pin:30u"/0.76um Au OVER 50u"/1.27um Ni ON THE CONTACT AREA,
 AND 100u"/2.54um SnPb PLATING OVER 50u"/1.27um Ni ON THE TERMINATION SECTION.

51720-10002004AALF Singal Pin:30u"/0.76um Au OVER 50u"/1.27um Ni ON THE WHOLE AREA.
 Power Pin:30u"/0.76um Au OVER 50u"/1.27um Ni ON THE CONTACT AREA,
 AND 78u"/2.00um Sn PLATING OVER 50u"/1.27um Ni ON THE TERMINATION SECTION.

PART NUMBER 51720-10002004AALF MEETS EUROPEAN UNION DIRECTIVE AND OTHER COUNTRY REGULATIONS AS DESCRIBED IN GS-22-008.


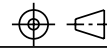
THE HOUSING WILL WITHSTAND EXPOSURE TO 260° PEAK TEMPERATURE FOR 10 SECONDS IN A WAVE SOLDER APPLICATION WITH A CIRCUIT BOARD.

4. "MANUFACTURER" NAME, P/N, AND DATE CODE TO APPEAR ON THIS SURFACE.

5. PRODUCT SPECIFICATION GS-12-149.

PCB - NOTES:

- 6. ALL HOLE DIAMETERS ARE FINISHED HOLE SIZE.
- 7. HOLD DOWN THROUGH HOLES ARE UNPLATED.
- 8. $\varnothing .0453 \pm 0.0010$ [1.151 \pm 0.025] DRILLED HOLES PLATED WITH 0.0003 [0.008] MIN SnPb OVER .001 [0.03] TO .003 [0.08] Cu PLATING TO ACHIEVE $\varnothing .040 \pm .003$ [1.02 \pm .07] HOLE.
- 9. "DIM XXX" TO BE DETERMINED BY THE CUSTOMER.

mat'l code		SEE NOTE 2		tolerances unless otherwise specified		CUSTOMER		 www.fciconnect.com	
lir	ecn no.	dr	date	linear	.XX±.01/0.X±0.3	projection	COPY		
A					.XXX±.005/0.XX±0.13			title	
				angles	.XXX±.0020/0.XXX±0.051	INCH/MM		product family	
				dr	0°±2°		scale	PwrBlade	
				enrg	STEVEN WANG 04/06/05	1:1		size	dwg no
				chr	STEVEN WANG 04/06/05		A	51720-10002004AA	
				appd	VICTOR LIN 04/06/05				4 of 4
					JOSEPH HSIA 04/06/05				
sheet index	revision sheet								

Tous droits strictement reserves. Reproduction ou communication a des tiers interdite sous quelque forme que ce soit sans autorisation ecrite du proprietaire. Propriete de c FCI. Droits de reproduction FCI.

FCI

All rights strictly reserved. Reproduction or issue to third parties in any form whatever is not permitted without written authority from the proprietor. Property of FCI. Copyright FCI.